



More Precision

confocalDT // Confocal chromatic measurement system





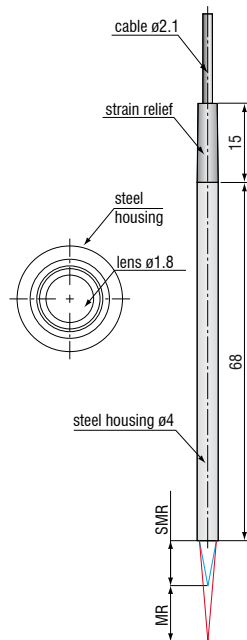
	Miniature sensors $\varnothing 4\text{mm}$ with axial or radial (90°) measuring direction
	Submicrometer resolution
	Distance measurement
	Extremely small spot size
	Passive design without electronic components

The miniaturized IFS2402 sensors are housed in a steel casing. The sensor contains a specially developed lens rod which enables the small design with an outer diameter of just 4mm. Therefore, these sensors can also be used in confined spaces to measure cavities and bores. In addition to sensors with axial measuring direction, sensors with radial beam path (90°) are available to detect the wall structure of cavities with highest accuracy.

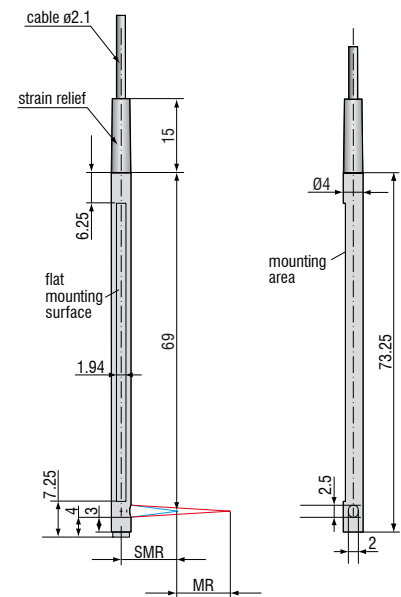


Inner diameter of small bores

IFS2402-0.4/1.5/4



IFS2402/90-1.5/4



Tolerance $\pm 0.1\text{mm}$

MR= Measuring Range SMR = Start of Measuring Range Dimensions in mm.

Sensor model (miniature)	IFS2402-0,4	IFS2402-1,5	IFS2402/90-1,5	IFS2402-4	IFS2402/90-4
Measuring range	400 μ m	1.5mm	1.5mm	3.5mm	2.5mm
Start of measuring range approx.	1.5mm	0.9mm	2.5mm ¹⁾	1.9mm	2.5mm ¹⁾
Spot diameter	10 μ m	20 μ m	20 μ m	20 μ m	20 μ m
Linearity	\sim 0.3 μ m	1.2 μ m	1.2 μ m	\sim 3 μ m	2 μ m
	$\leq \pm 0.08$ % FSO				
Resolution ²⁾	16nm	60nm	60nm	0.1 μ m	0.1 μ m
Weight	15g				
Max. tilt (direct reflection)	$\pm 8^\circ$	$\pm 5^\circ$	$\pm 5^\circ$	$\pm 3^\circ$	$\pm 3^\circ$
Protection class	IP40				
Operating temperature	+5 ... +70 °C				
Storage temperature	-30 ... +70 °C				
Sensor cable (optical fiber)	length: integral cable 2m; option up to 50m; bending radius: static 30mm; dynamic 40mm				
Shock	15g, 6ms				
Vibration	2g / 10Hz ... 500Hz				

FSO = full scale output

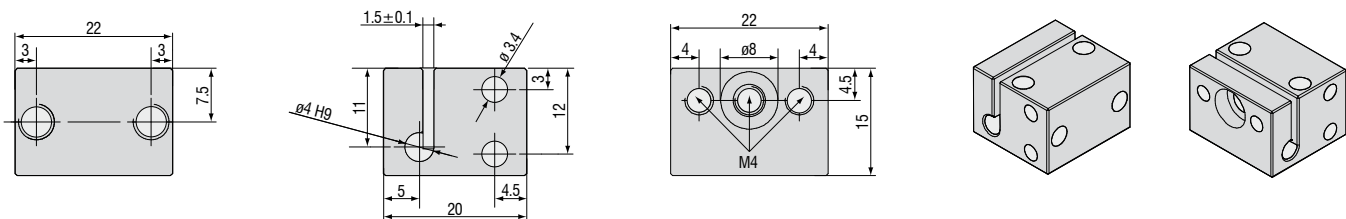
All data at constant ambient temperature (25 \pm 2°C) against optical flat; specifications can change when measuring different materials.

¹⁾ Start of measuring range measured from sensor axis

²⁾ Average from 512 values

Accessories: mounting adapter

MA2402 for sensors 2402



System design

The confocalDT 247x system consists of:

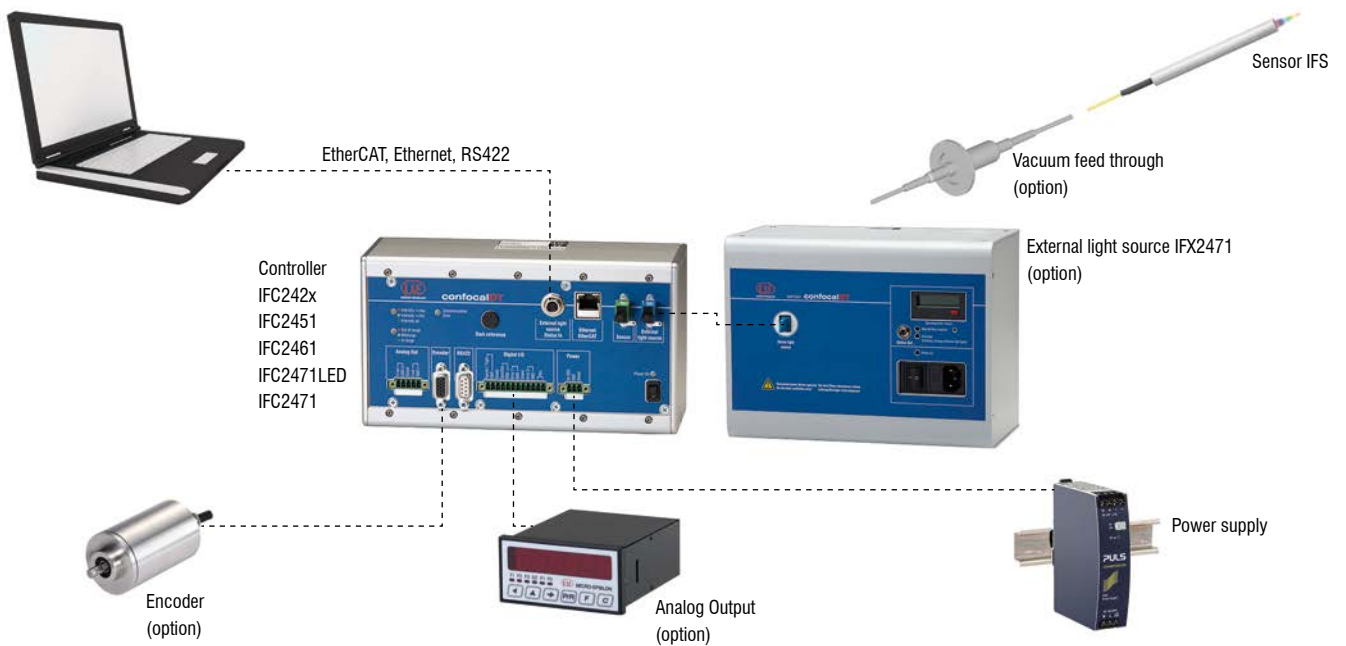
- Sensor IFS240x
- Controller IFC242x

The confocalDT 2451 / 2461 / 2471 HS system consists of:

- Sensor IFS240x
- Controller IFC2451 / IFC2461 / IFC2471LED

The confocalDT 2471 system consists of:

- Sensor IFS240x
- Controller IFC2471 (for external light source)
- Xenon light source IFX2471



Customer-specific modifications

On occasions, application requirements exceed the performance limits of standard sensors and controllers. To facilitate such special tasks it is possible to customize the sensor design and to adjust the controller accordingly. Common requests for modifications include changes in design, mounting options, customized cable lengths and modified measuring ranges.

Possible modifications

- Sensors with connector
- 90° cable outlet
- Vacuum suitability, no outgassing, also UHV
- Reduced sensor length
- Customer-specific mounting options
- Extended sensor lance
- Optical filter for ambient light compensation
- Housing material



Accessories

Software

IFD24n1-Tool Free demo software tool included

Light source accessories

IFX2471/Xe/75 External Xenon light source for IFC2471 controller (70 kHz)
 IFX2471/Xe/75 Lamp module for IFX2471
 IFL2451/LE Lamp module for IFC2451
 IFL2451/LED(003) Lamp module for IFC2451(003) with cooling element
 CL2471-1/Xe Light source cable, 1m

Accessories IFS2406

C2401-X (01) Optical fiber $\varnothing 26\mu\text{m}$ (3m, 10m)

Accessories IFS2405

C2401-X Optical fiber (3m, 10m, customer-specific length up to 50m)
 C2401/PT-X Protection tube for mechanical stress
 (3m, 10m, customer-specific length up to 50m)
 C2401-3(10) Sensor cable for drag chain use, 3m
 C2401-5(10) Sensor cable for drag chain use, 5m

Accessories IFS2402/2403

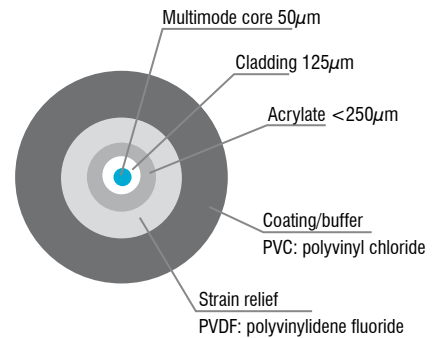
CE2402-X Sensor cable extension (3/10/13/30/50m)
 CE2402-X/PT Sensor with protection tube (for mechanical stress)
 (3m/10m, customer-specific length up to 50m)
 C2402/Vac/KF16 Vacuum feed through for optical fiber, 1 channel
 C2405/Vac/6/CF63 Vacuum feed through for optical fiber, 6 channels
 C2405/Vac/9/CF63 Vacuum feed through for optical fiber, 9 channels

Other accessories

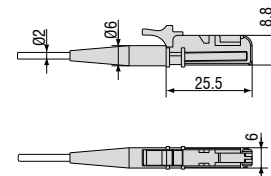
SC2471-3/USB/IND Connector cable IFC2451/61/71, 3m
 SC2471-3/IF2008 Connector cable IFC2451/61/71-IF2008, 3m
 SC2471-3/CSP Connector cable IFC2451/61/71-CSP2008, 3m
 SC2471-10/IF2008 Connector cable IFC2451/61/71-IF2008, 10m
 SC2471-10/CSP Connector cable IFC2451/61/71-CSP2008, 10m
 SC2471-10/USB/IND Connector cable IFC2451/61/71, 10m
 SC2471-20/USB/IND Connector cable IFC2451/61/71, 20m
 PS2020 Power supply 24V / 2.5A
 EC2471-3/OE Encoder cable, 3m

Optical fiber

Temperature range : -50°C to 90°C
 Bending radius: 30/40mm



E2000/APC standard connector



High performance sensors made by Micro-Epsilon



Sensors and systems for displacement and position



Sensors and measurement devices for non-contact temperature measurement



2D/3D profile sensors (laser scanner)



Optical micrometers, fiber optic sensors and fiber optics



Color recognition sensors, LED analyzers and color inline spectrometer



Measurement and inspection systems