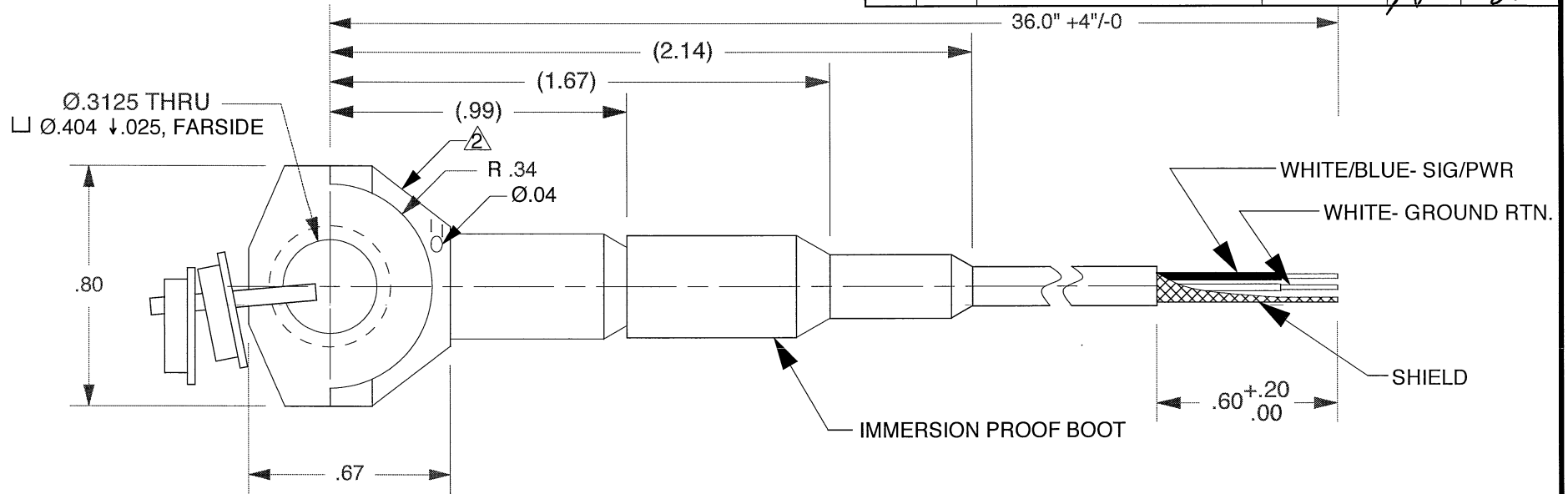
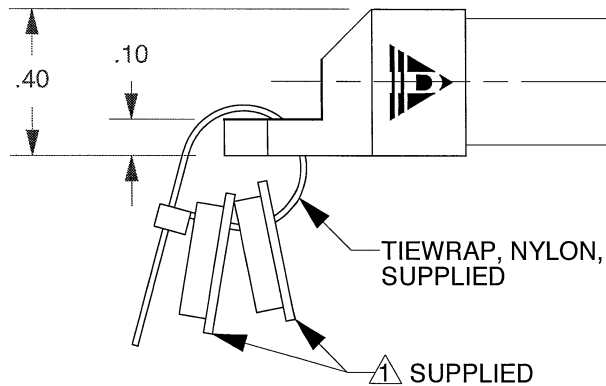
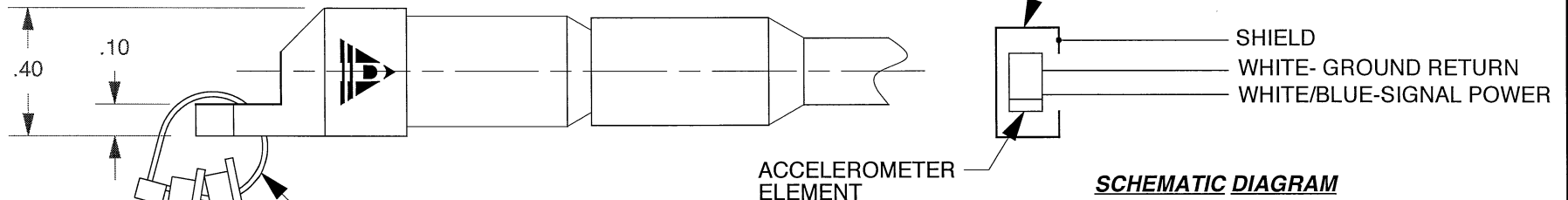


REV	ECN	DESCRIPTION	BY/DATE	CHK	APPR
C	5321	ADDED Ø.3125 THRU.....	RLA 6/27/08	CS	CES
D	8885	SEE ECN	AB 07/17/12	<i>JA</i>	<i>BA</i>



(+) SENSITIVE AXIS



▲ MARKING: DYTRAN
3077A
S/N XXX

▲ ADAPTER BUSHINGS SUPPLIED:
6555A (Ø.250, THRU HOLE)
6555A1 (Ø.188, THRU HOLE)

UNLESS OTHERWISE SPECIFIED:
DIMENSIONS ARE IN INCHES.
DIMENSIONS IN BRACKETS [] ARE IN MILLIMETERS.
TOLERANCES ARE:

INCHES	METRIC	ANGLES
.XX ±.015	.X ±0.8	±1/2°
.XXX ±.005	.XX ±0.25	

DYTRAN INSTRUMENTS, INC.		MASTER ONLY IF IN RED		CHATSWORTH, CA.	
SCALE	2X	REV	-	DATE	SEE REV BLK
DATE	6/10/99	PART NO.	-	ECN	-
DRAWN	N.C.	CHECKED	R.A.	MAT'L	-
APPROVED	N.C.	5/14/03	NEXT ASSEMBLY	USED ON	3077A
TITLE				DWG NO.	
OUTLINE INSTALLATION DRAWING, MODEL 3077A, 3077A1				127-3077A	
SHEET				1 OF 1	

	IEPE QUARTZ SHEAR ACCELEROMETER	REV B, ECN 12096, 07/14/15
--	--	----------------------------



- EXCELLENT LINEARITY
- ELECTRICALLY ISOLATED
- HERMETICALLY SEALED
- IMMERSION PROOF BOOT

PHYSICAL
 Weight, Less Cable, Max
 Integral Cable [1]
 Length
 Mounting Provision, Integral Bracket
 Material, Accelerometer
 Sensing Material

ENGLISH		SI	
0.39	oz	11	grams
Flying Leads		Flying Leads	
36	Inches	914	mm
Ø .31 Thru Hole	Inches	Ø 7.9 Thru Hole	mm
300 Series S.S		300 Series S.S	
Quartz		Quartz	

PERFORMANCE
 Sensitivity, ± 5% [2]
 Range F.S for ± 5 Volts Output
 Frequency Range, ± 10%
 Resonant Frequency
 Equivalent Electrical Noise Floor
 Transverse Sensitivity, Max
 Linearity [3]
 Strain Sensitivity @ 250µσ

10	mV/g	1	mV/m/s ²
±500	g	±4905	m/s ²
1.1 to 5000	Hz	1.1 to 5000	Hz
> 26	kHz	> 26	kHz
0.007	Grms	0.07	m/s ² rms
5	%	5	%
± 1%	% F.S.	± 1%	% F.S.
0.012	G's/µσ	0.012	G's/µσ

ENVIRONMENTAL
 Maximum Vibration
 Maximum Shock
 Temperature Range
 Coefficient of Thermal Sensitivity
 Seal, Hermetic

±600	Gpeak	±5886	m/s ² peak
±3000	Gpeak	±29430	m/s ² peak
-60 to +250	*F	-51 to +121	*C
0.03	%/°F	0.05	%/°C
Welded/GTM Header		Welded/GTM Header	

ELECTRICAL
 Supply Current Range [4]
 Compliance Voltage Range
 Output Impedence, Typ
 Bias Voltage
 Discharge Time Constant
 Electrical Isolation, Case Ground To Mounting Surface

2 to 20	mA	2 to 20	mA
+ 18 to +30	Volts	+ 18 to +30	Volts
100	Ω	100	Ω
+7 to +9	VDC	+7 to +9	VDC
0.3 to 2.0	Sec	0.3 to 2.0	Sec
10	GΩ, min	10	GΩ, min

This family also includes:

Model	Integral Cable Length (in)		
3077A1	120		

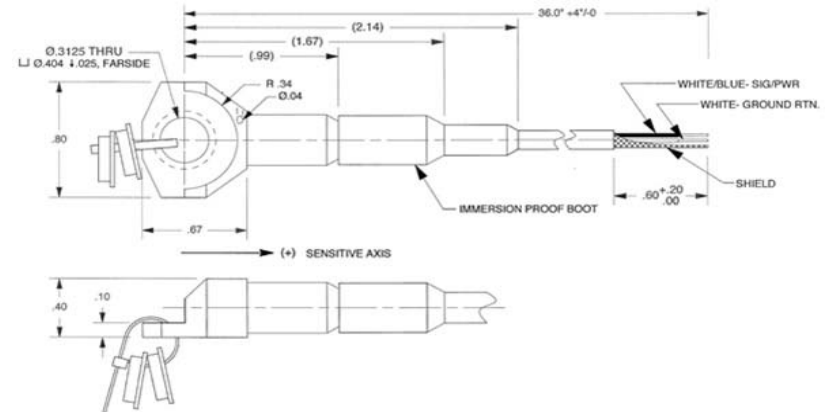
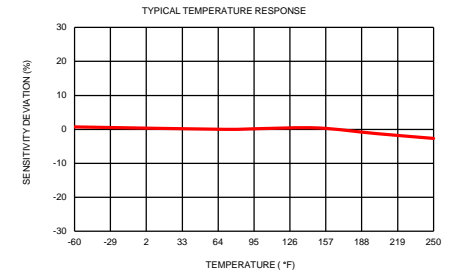
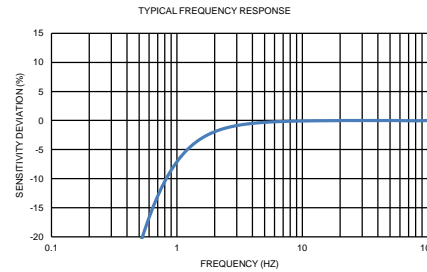
Refer to the performance specifications of the products in this family for detailed description

Supplied Accessories:

- 1) Accredited calibration certificate (ISO 17025)
- 2) Adaptor bushing (Ø .250 thru hole), model # 6555A, Qty. 1
- 3) Adaptor bushing (Ø .188 thru hole), model # 6555A1, Qty. 1

Notes:

- [1] Radially Mounted
- [2] Measured at 100Hz, 1 Grms per ISA RP 37.2
- [3] Measured using zero-based straight line method, % of F.S. or any lesser range.
- [4] Do not apply power to this system without current limiting, 20 mA MAX. To do so will destroy the IC charge amplifier.
- [5] In the interest of constant product improvement, we reserve the right to change specifications without notice.



Units on the line drawing are in inches, units in brackets are in millimeters. Refer to 127-3077A for more information.

