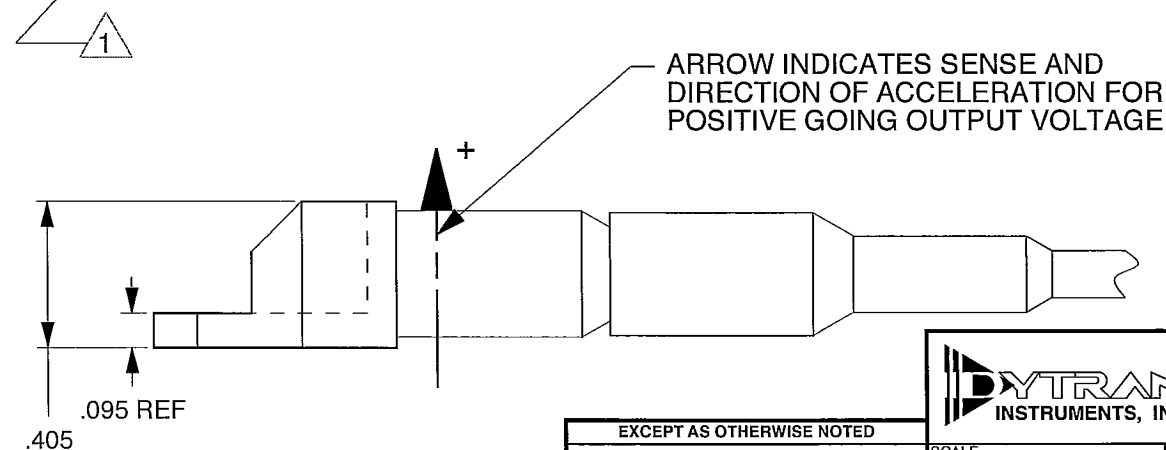
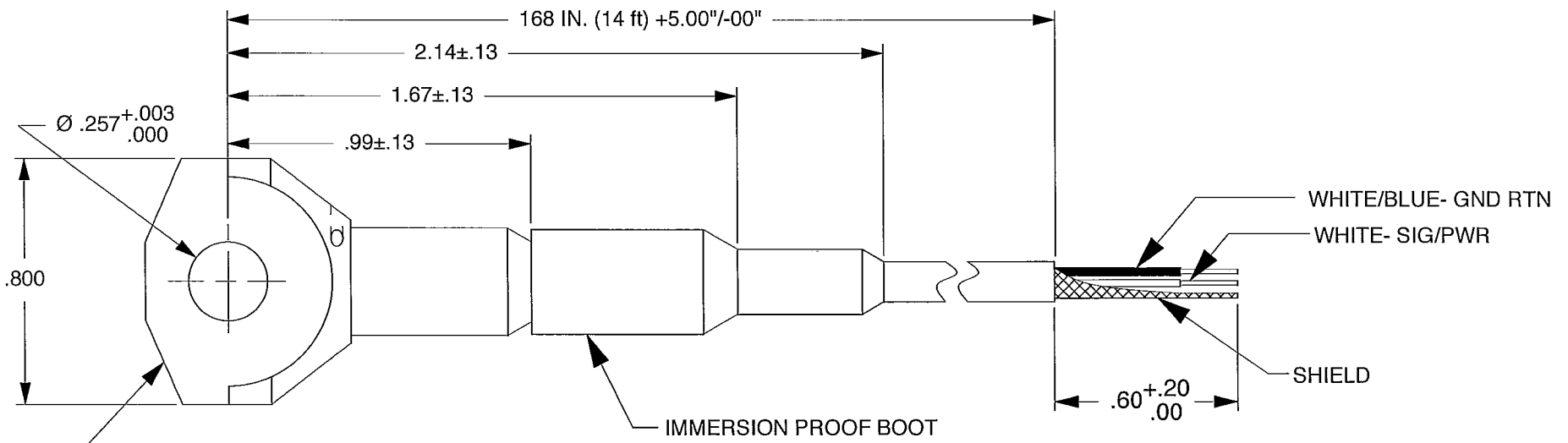


REV	ECN	DESCRIPTION	BY/DATE	CHK	APPR
F	9402	ADDED NOTE 1. HOUSING MATERIAL: 300 SERIES STAINLESS STEEL	RA 11/30/12	EM 12/4/12	DV



1 HOUSING MATERIAL: 300 SERIES STAINLESS STEEL.

EXCEPT AS OTHERWISE NOTED  
 ALL DIMENSIONS IN INCHES  
 TOLERANCE: .XXX = ± .005 .XX = ± .010  
 SURFACE FINISH EXCEPT AS NOTED ✓  
 BREAK EDGES TO DEBURR RADIUS OR CHAMFER  
 THESE DIAS ⊙ TO T.I.R.  
 FILLETS - MAX RAD.

		<b>MASTER ONLY IF IN RED</b>		CHATSWORTH, CA.	
SCALE	2X	REV	DATE	ECN	SEE REV BLK
DATE	2/26/02	PART NO. MODEL 3079A			
DRAWN	N.C.	CHECKED	R.A.	MAT'L -	
APPROVED	N.C.	5/14/03	NEXT ASSEMBLY		USED ON 3079A
TITLE					DWG NO.
<b>OUTLINE INSTALLATION DRAWING, MODEL 3079A</b>					<b>127-3079A</b>
SHEET					1 OF 1

<b>Model Number</b> 3079A	<b>PERFORMANCE SPECIFICATIONS</b>	<b>DOC NO</b> PS3079A
<b>IEPE ACCELEROMETER</b>		REV B, ECN 12974, 09/22/16



- HERMETICALLY SEALED
- EXCELLENT LINEARITY

**PHYSICAL**

Weight (Less Cable), Max  
Integral Cable, Radially Mounted  
Mounting Provision  
Material, Housing/Connector  
Sensing Element  
Cable Jacket Material

Integral Bracket

ENGLISH		SI	
0.4	oz	11	grams
2-Wire, Pigtailed End Ø .257 Thru Hole	in	2-Wire, Pigtailed End Ø 6.52 Thru hole	mm
300 Series Steel		300 Series Steel	
Quartz		Quartz	
Tefzel		Tefzel	

**PERFORMANCE**

Sensitivity, ±5% [1]  
Range for ± 5 Volts Output  
Frequency Response, ± 10%  
Resonant Frequency  
Broad Band Resolution  
Linearity [2]  
Maximum Transverse sensitivity  
Strain Sensitivity @ 250µε

10	mV/g	1.02	mV/m/s <sup>2</sup>
500	g	4905	m/s <sup>2</sup>
1.1 to 3000	Hz	1.1 to 3000	Hz
>26	kHz	>26	kHz
0.007	grms	0.069	m/s <sup>2</sup> rms
±1	% F.S.	±1	% F.S.
5	%	5	%
0.012	g/µε	0.12	m/s <sup>2</sup> /µε

**ENVIRONMENTAL**

Maximum Vibration  
Maximum Shock  
Temperature Range  
Seal

600	gpeak	5886	m/s <sup>2</sup> peak
3000	gpeak	29430	m/s <sup>2</sup> peak
-60 to +250	*F	-51 to +121	*C
Hermetic		Hermetic	

**ELECTRICAL**

Supply Current Range [3]  
Compliance Voltage Range  
Output Impedance, Max  
Bias Voltage  
Discharge Time Constant  
Electrical Isolation, Case grounded to the mounting surface

2 to 20	mA	2 to 20	mA
+18 to +30	Volts	+18 to +30	Volts
100	Ω	100	Ω
7 to 9	VDC	7 to 9	VDC
0.3 to 0.8	Sec	0.3 to 0.8	Sec
10	GΩ,min	10	GΩ,min

**This family also includes:**

Model	Sensitivity (mV/g)	Frequency Response (Hz)	Time Constant (Sec)	Operating Temp (*F)

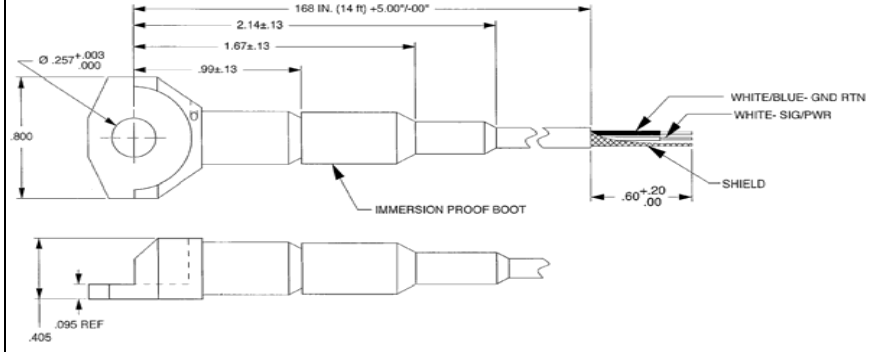
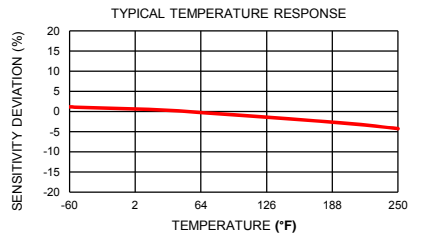
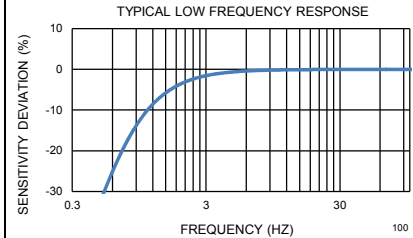
Refer to the performance specifications of the products in this family for detailed description

**Supplied Accessories:**

- 1) Accredited calibration certificate (ISO 17025)

**Notes:**

- [1] Measured at 100Hz, 1 grms per ISA RP 37.2.
- [2] Measure using zero-based straight line method, % of F.S. or any lesser range.
- [3] Do not apply power to this system without current limiting, 20 mA MAX. To do so will destroy the IC charge amplifier.



Units on the line drawing are in inches, units in brackets are in millimeters. Refer to 127-3079A for more information.



21592 Marilla Street, Chatsworth, California 91311 Phone: 818.700.7818 Fax:818.700.7880 www.dytran.com  
For permission to reprint this content, please contact info@dytran.com