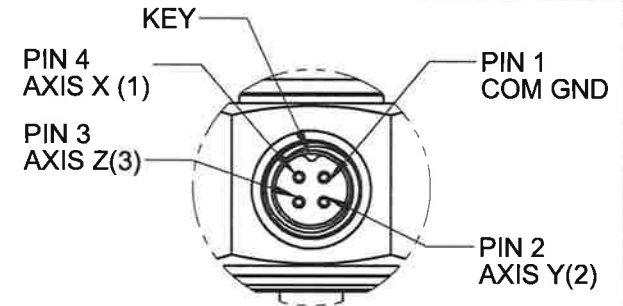
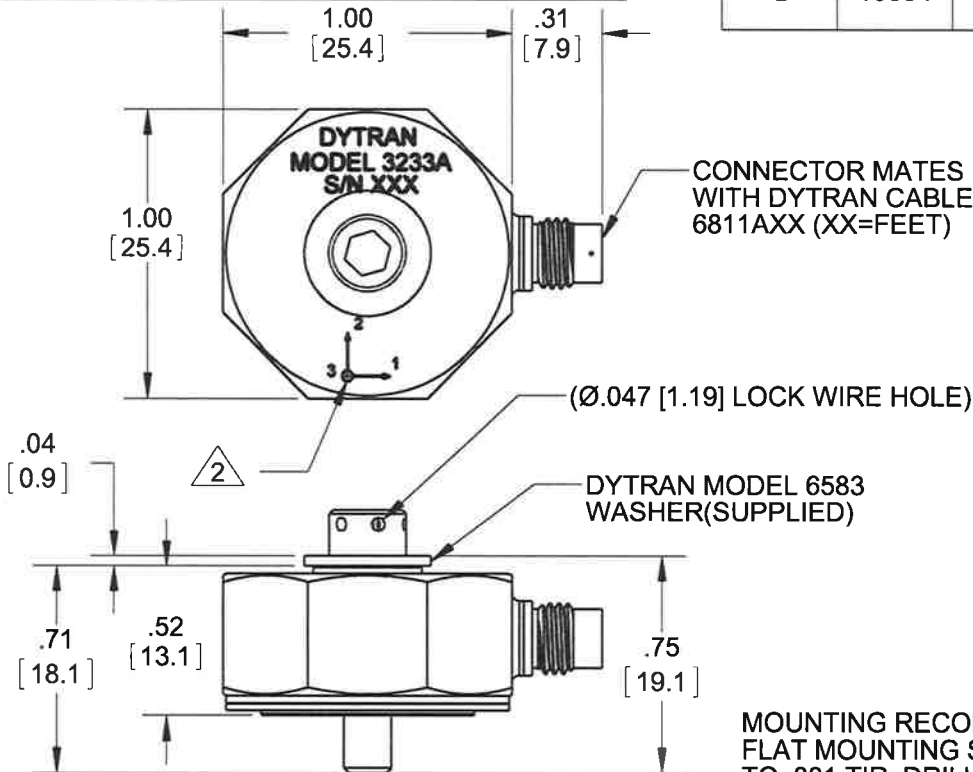


PROPRIETARY AND CONFIDENTIAL

THE INFORMATION CONTAINED IN THIS DRAWING IS THE SOLE PROPERTY OF DYTRAN INSTRUMENTS INC. ANY REPRODUCTION IN PART OR AS A WHOLE WITHOUT THE WRITTEN PERMISSION OF DYTRAN INSTRUMENTS INC. IS PROHIBITED

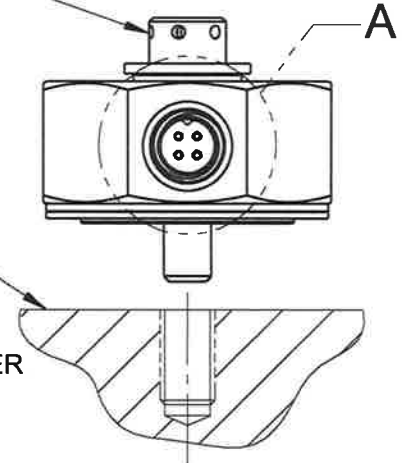
REVISIONS

| REV | ECN | DESCRIPTION | BY/DATE | CHK | APPR |
|-----|-------|-------------|-------------|-----|--------------------|
| B | 10584 | SEE ECN | RA 11/26/13 | MH | <i>[Signature]</i> |



**DETAIL A
SCALE 2:1**

DYTRAN MODEL 6582
8-32 MTG SCREW
(SUPPLIED)



3. WEIGHT: 30 GRAMS MAX

2 ARROWS INDICATE DIRECTION OF ACCELERATION FOR POSITIVE OUTPUT.

1. MATERIAL: TITANIUM ALLOY

NOTES: UNLESS OTHERWISE SPECIFIED

MOUNTING RECOMMENDATIONS: PREPARE FLAT MOUNTING SURFACE Ø.80 [20.3], FLAT TO .001 TIR. DRILL AND TAP 8-32 UNF-3B ∇.300 [7.62] MIN. RECOMMENDED MOUNTING TORQUE: 15 LB IN +5/-0 LB IN. FOR BEST FREQUENCY RESPONSE ACCELEROMETER MUST CONTACT MOUNTING SURFACE OVER ENTIRE MOUNTING SURFACE OF ACCELEROMETER

CONTRACT NO.



TITLE:

**OUTLINE/INSTALLATION
DRAWING MODEL 3233A**

| APPROVALS | | DATE |
|-----------|-----|----------|
| ORIG | PML | 10/25/03 |
| CHK | MH | 11/27/13 |
| APP | PML | 06/22/04 |
| APP | | |

| SIZE | CAGE CODE | DWG. NO. | REV |
|----------|--------------|------------------|----------|
| A | 2W033 | 127-3233A | B |

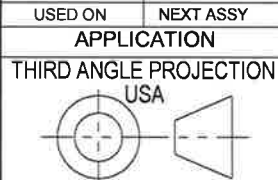
SCALE: NONE SOLIDWORKS SHEET 1 OF 1

UNLESS OTHERWISE SPECIFIED:
INTERPRET DIM & TOL PER ASME Y14.5M - 1994.
REMOVE BURRS.
COUNTERSINK INTERNAL THDS 90° TO MAJOR DIA.
CHAM EXT THDS 45° TO MINOR DIA.
THD LENGTHS AND DEPTHS ARE FOR MIN FULL THDS.
THDS PER MIL-S-7742.
DIMENSIONS APPLY AFTER FINISHING.

UNLESS OTHERWISE SPECIFIED:
DIMENSIONS ARE IN INCHES.
DIMENSIONS IN BRACKETS [] ARE IN MILLIMETERS
TOLERANCES ARE:
INCHES METRIC ANGLES
XX ± .03 X ± 0.8 ± 1°
XXX ± .010 .XX ± 0.25

MATERIAL
FINISH
DO NOT SCALE DRAWING

ALL MACHINED SURFACES. 63
TOTAL RUNOUT WITHIN .005.
BREAK SHARP EDGES .005 TO .010.
MACHINED FILLET RADII .005 TO .015.
WELDING SYMBOLS PER AWS A2.4.
ABBREVIATIONS PER MIL-STD-12.



| | | |
|-------------------------------------|--------------------------------------|----------------------------------|
| MODEL NUMBER 3233A | PERFORMANCE SPECIFICATION | DOC NO. PS3233A |
| | ACCELEROMETER, TRIAXIAL, IEPE | REV E, ECN 13949, 01/03/18 |



- HERMETICALLY SEALED
- BASE ISOLATED
- 8-32 MOUNTING PROVISION

PHYSICAL

| | ENGLISH | | SI | |
|---------------------------|----------------|----|----------------|-------|
| Weight, Max | 1.05 | oz | 30 | grams |
| Mounting | 8-32 Screw | | 8-32 Screw | |
| Connector Type [1] | 4-Pin | | 4-Pin | |
| Material, Case/ Connector | Titanium Alloy | | Titanium Alloy | |

PERFORMANCE

| | ENGLISH | | SI | |
|-------------------------------------|-------------|----------------|-------------|-------------------------------|
| Sensitivity, (±10%) [2] | 1000 | mV/g | 102 | mV/ m/s ² |
| Range, Full Scale (Each Axis) | 5 | ± g pk | 49.1 | ± m/s ² pk |
| Frequency Range, All Axes (±5%) | 0.5 to 3000 | Hz | 0.5 to 3000 | Hz |
| Frequency Range Axis 1 & 2, (±10%) | 0.3 to 4000 | Hz | 0.3 to 4000 | Hz |
| Frequency Range Axis 3, (±10%) | 0.3 to 6000 | Hz | 0.3 to 6000 | Hz |
| Element Natural Frequency | >20 | kHz | >20 | kHz |
| Equivalent Electrical Noise | 0.00005 | g rms | 0.00049 | m/s ² rms |
| Spectral Noise | | | | |
| 1Hz | 12 | µg rms / √(Hz) | 118 | µm/s ² rms / √(Hz) |
| 10Hz | 4 | µg rms / √(Hz) | 39 | µm/s ² rms / √(Hz) |
| 100Hz | 1.2 | µg rms / √(Hz) | 12 | µm/s ² rms / √(Hz) |
| 1000Hz | 0.5 | µg rms / √(Hz) | 5 | µm/s ² rms / √(Hz) |
| Linearity [3] | 1 | % F.S. | 1 | % F.S. |
| Transverse Sensitivity, Max | 5 | % | 5 | % |

ENVIRONMENTAL

| | ENGLISH | | SI | |
|-----------------------|-------------|--------|------------|-----------------------|
| Vibration Max | 500 | ± g pk | 4905 | ± m/s ² pk |
| Shock Max | 5000 | ± g pk | 49050 | ± m/s ² pk |
| Operating Temperature | -60 to +200 | °F | -51 to +93 | °C |
| Seal | Hermetic | | Hermetic | |

ELECTRICAL

| | ENGLISH | | SI | |
|--------------------------------------|------------|-----|------------|-----|
| Supply Current Range [4] | 2 to 20 | mA | 2 to 20 | mA |
| Compliance Voltage Range (Each Axis) | +18 to +30 | VDC | +18 to +30 | VDC |
| Output Impedance, Typ. | 100 | Ω | 100 | Ω |
| Output Bias Voltage | +11 to +13 | VDC | +11 to +13 | VDC |
| Discharge Time Constant | 0.9 to 2.0 | Sec | 0.9 to 2.0 | Sec |
| Ground Isolation, Min. [5] | 10 | MΩ | 10 | MΩ |

This family also includes:

| Model | Sensitivity (mV/g) | Range (Gpeak) | Resolution (Grms) | Oper. Temp (°F) | TC |
|-------|--------------------|---------------|-------------------|-----------------|----|
| | | | | | |
| | | | | | |
| | | | | | |

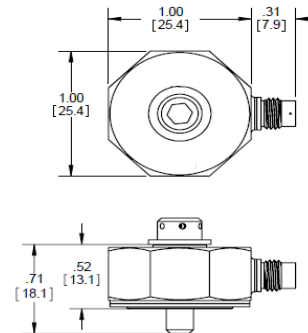
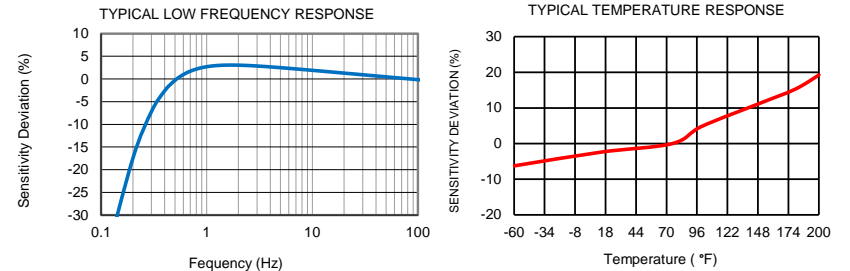
Refer to the performance specifications of the products in this family for detailed description.

Supplied Accessories:

- 1) Accredited Calibration Certificate (ISO 17025)
- 2) Washer 6583 and Mounting Screw 6582

Notes:

- [1] Connector mates with Dytran Cable Assy. Model 6811AXX. (XX = Length in Feet)
- [2] Measured At 100 Hz, 1 Grms per ISA RP 37.2
- [3] Measured using zero-based best straight-line method, % of F.S. or any lesser range.
- [4] Do not apply power to this device without current limiting, 20mA Max, To do so will destroy the integral IC amplifier
- [5] Case grounded to signal ground. Case isolated from mounting surface
- [6] In the interest of constant product improvement, we reserve the right to change specifications without notice



Units on the line drawing are in inches, units in brackets are in millimeters. Refer to 127-3233A for more information.



21592 Marilla Street, Chatsworth, California 91311 Phone: 818.700.7818 Fax:818.700.7880 www.dytran.com For permission to reprint this content, please contact info@dytran.com