



More Precision

induSENSOR // Linear inductive displacement sensors





- No wear and no maintenance
- Linearity 0.25% FSO
- Integrated microelectronics
- Short and compact design
- Rugged encapsulated sensor construction
- For use in difficult ambient conditions
- Lateral measurement possible

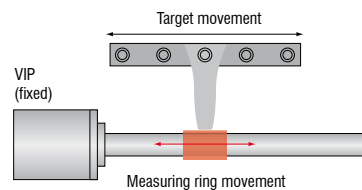
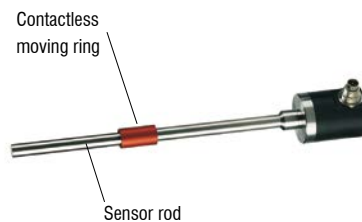
VIP sensors operate with a contactless moving ring. There is no mechanical contact between the measuring element (ring) and the sensor rod. The sensor therefore operates without any wear.

Parallel mounting

The optimum ratio of measurement range to installed length of the sensor reduces the installation space needed for the VIP series.

The parallel connection of the measurement object and measuring ring facilitates completely new construction and installation options. Whereas with conventional sensors with an axial measurement path, the length of the plunger must be added to the actual housing length, with the VIP series only the housing length has to be considered during the design.

With protection class IP67, the sensors can even be used in harsh industrial environments.

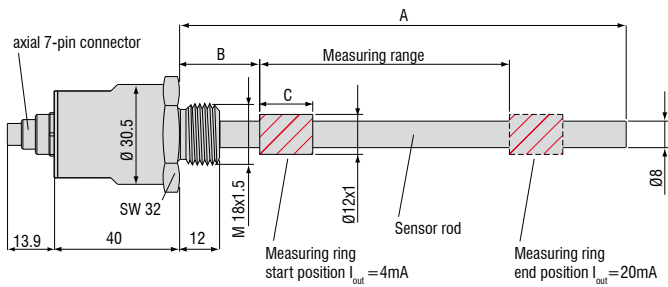


Model	VIP-50	VIP-100	VIP-150
Measuring range	50mm	100mm	150mm
Linearity	standard $\pm 0.5\%$ FSO	0.25mm	0.75mm
	option $\pm 0.25\%$ FSO	0.125mm	-
Resolution	$< 0.03\%$ FSO	0.015mm	0.045mm
Temperature range		-40°C ... +85°C	
Temperature stability	zero	$\pm 50\text{ppm} / ^\circ\text{C}$	
	sensitivity	$\pm 150\text{ppm} / ^\circ\text{C}$	
Frequency response (-3 dB)		300Hz	
Output		4 - 20mA	
Output load		500Ω	
Power supply		18 - 30VDC	
Current consumption		max. 40mA	
Protection class		IP 67	
Electromagnetic compatibility (EMC)		EN 61326-1:2006 (spurious emission)	
		EN 61326-2-3:2006 (immunity to interference)	
Shock ¹⁾		40g, 3000 shocks / axis	
		100g radial, 300g axial	
Vibration		5Hz ... 44Hz $\pm 2.5\text{mm}$; 44Hz ... 500Hz $\pm 20\text{g}$	

FSO = Full Scale Output
¹⁾ Half sinusoid 6ms

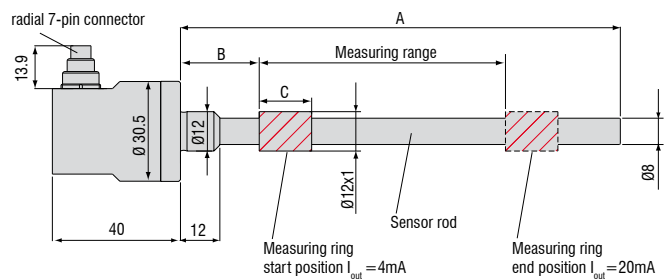
VIP series housing version -GA- (option)

Dimensions in mm, not to scale

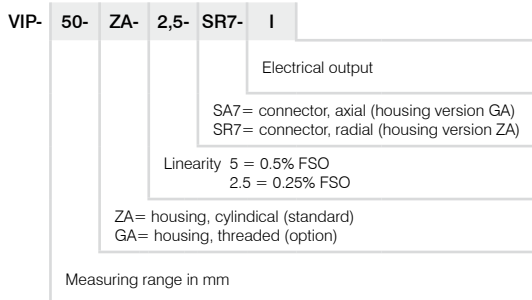


VIP series housing version -ZA-

Dimensions in mm, not to scale



Article



Measuring range	A	B	C
50	105	24	11.5
100	175	27	22
150	242	30	33

General accessories

2960031	MC25D	digital micrometer calibration fixture
2420062	PS2020	power supply on DIN rail, input 100 - 240VAC, output 24VDC / 2.5A
2984026		certificate function and linearity inspection certificate incl. protocol with listed measurement data of the linearity inspection and documentation

Accessories VIP and LVP series**Connection cable**

0157043	C703-5	VIP/LVP/EDS 7-pin connection cable, 5m
2902084	C703-5/U	VIP/LVP/EDS 7-pin connection cable, 5m for voltage output 1 - 5V
0157050	C703/90-5	VIP-/LVP-/EDS-7-pin connection cable, 5m with 90° cable connector
2962001	MBS 12/8	mounting set for VIP series with 3 mounting blocks and 2 adapting rings
0487087	MBS 12/8	mounting block VIP/LVP series

Plunger

0800114	LVP-50	plunger
0800115	LVP-100	plunger
0800116	LVP-200	plunger

Accessories LDR series**Connection cable**

0157047	C7210-5/3	sensor cable, 5m, with cable connector
0157048	C7210/90-5/3	sensor cable, 5m, with 90° cable connector

Supply cable

2901087	PC710-6/4	supply/output cable, 6m
---------	-----------	-------------------------

Plunger

0800136	LDR-10	plunger
0800137	LDR-25	plunger
0800138	LDR-50	plunger

Accessories EDS series**Service**

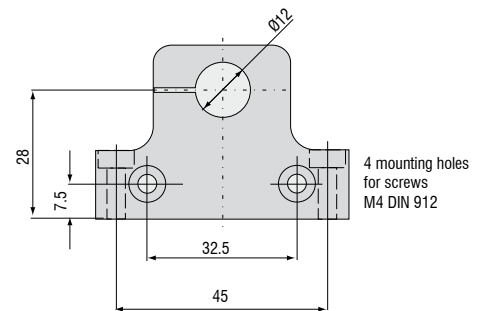
2985001		Function and linearity inspection for EDS series incl. pressure inspection and documentation without recalibration
---------	--	---

Connection cable

0157043	C703-5	VIP/LVP/EDS 7-pin connection cable for S series, 5m
2902084	C703-5/U	VIP/LVP/EDS 7-pin connection cable for S series, 5m for voltage output 1 - 5V
0157050	C703/90-5	VIP/LVP/EDS 7-pin connection cable for S series, 5m with 90° cable connector
2901143	C705-5	VIP-/LVP-/EDS -pin connection cable for F series, 5m
2901160	C705-15	VIP-/LVP-/EDS -pin connection cable for F series, 15m



Linearity inspection certificate

Mounting block VIP and LVP series

AccessoriesLVDT series

Sensor cable

2902004	C701-3	sensor cable 3m, with connector and tin-plated free ends
2902013	C701-6	sensor cable, 6m, with connector and tin-plated free ends
2902009	C701/90-3	sensor cable, 3m, with 90° connector and tin-plated free ends
2966002	MSC710	connector set for supply/output cable
2981010		connector mounting and calibration of MSC710

Connection cable

2901087	PC710-6/4	supply/output cable, 6 m
---------	-----------	--------------------------

Plunger

0800001	DTA-1D	plunger
0800002	DTA-3D	plunger
0800003	DTA-5D	plunger
0800004	DTA-10D	plunger
0800005	DTA-15D	plunger
0800006	DTA-25D	plunger

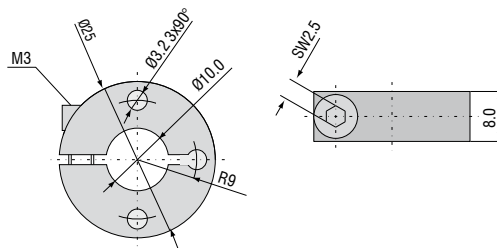
Flange

0483090.01	DTA-F10	mounting flange, slotted for DTA-1D, DTA-3D, DTA-5D, DTA-10D
0483083.02	DTA-F20	mounting flange, slotted for DTA-15D, DTA-25D

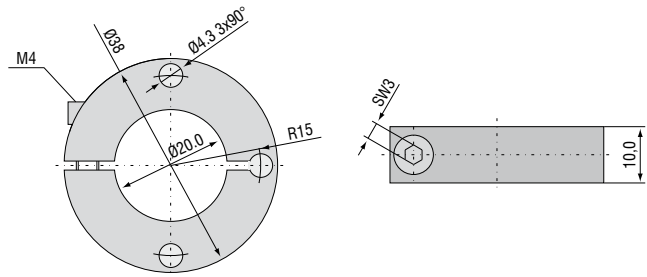
Probe tips

0459002	type 2
0459001	type 2 hard metall
0459003	type 11
0459004	type 13

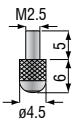
Flange DTA-F10



Flange DTA-F20



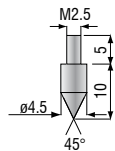
Standard probe tip: type 2



Option: type 11



Option: type 13



High performance sensors made by Micro-Epsilon



Sensors and systems for displacement and position



Sensors and measurement devices for non-contact temperature measurement



2D/3D profile sensors (laser scanner)



Optical micrometers, fibre optic sensors and fibre optics



Colour recognition sensors, LED analyzers and colour online spectrometer



Measurement and inspection systems

