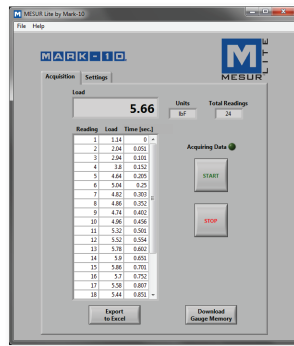




The M31 digital force / torque indicator is designed to work with a wide range of Mark-10 remote force and torque sensors (see page 3). With exclusive Plug & Test® technology, all calibration and configuration data is saved within the sensor's smart connector, not the indicator, allowing for true interchangeability. In addition, all sensors are fully compatible with other Mark-10 indicators.

The M31 shares its menu structure and most specifications with Series 3 digital force gauges. The sampling rate is 2,000 Hz, producing accurate results under a wide range of test conditions. A backlit graphic LCD displays large characters, and a menu is available to access the gauges' features and configurable parameters. The display also features an analog load bar for graphical representation of applied load, as well as set point indicators for pass-fail testing. USB output is provided for data collection purposes.

The gauges include MESUR® Lite data acquisition software. MESUR® Lite tabulates continuous or single point data. One-click export to Excel allows for further data manipulation.



MESUR® Lite data acquisition software is included with the M31



The M31 is shown mounted to an optional AC1100 tabletop stand with Series R03 force sensor

Features

- Interchangeable force and torque sensors through Plug & Test® technology
- High-speed 2,000 Hz sampling rate
- USB data output of continuous or individual data points
- Ultra-compact size
- Large backlit graphic display
- Programmable set points with pass/fail indicators
- Live load bar graph with set point markers
- Peak readings and set points always displayed
- Configurable audio alarms and key tones
- 4 selectable units of measurement
- MESUR® Lite data collection software included

Display Indicators

- Set points
- Pass/fail indicators
- Current reading
- Battery indicator



- Tension / compression indicator / Clockwise / counter-clockwise indicator
- Peak readings
- Measurement mode
- Units of measurement
- Analog load bar w/set point markers

Focus on Engineering: Plug & Test® Technology



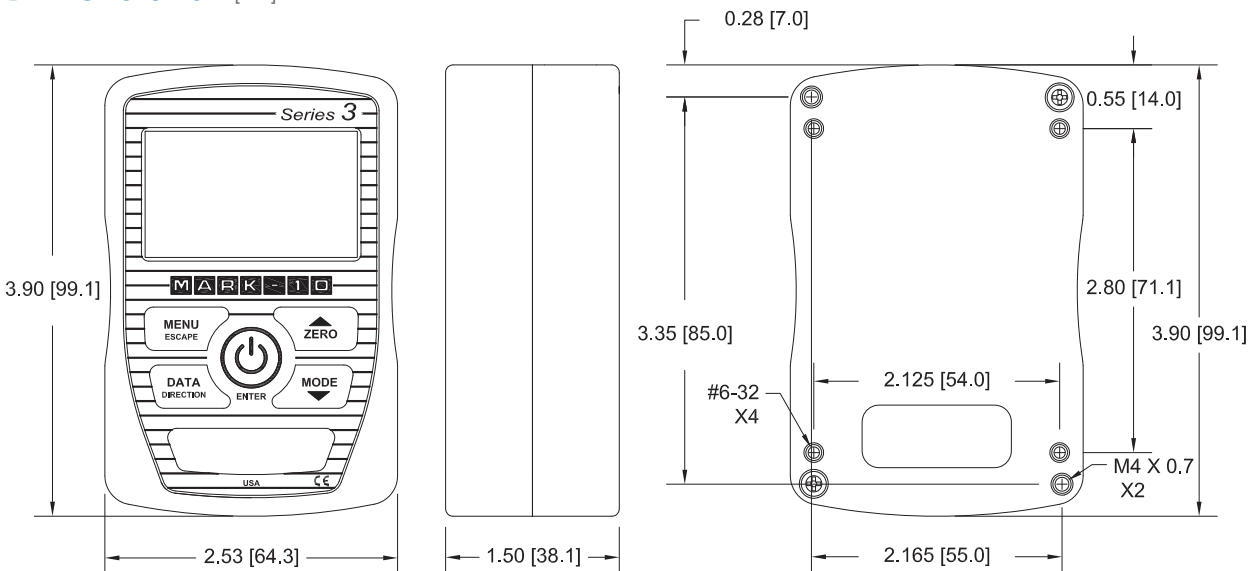
▲ Unique Plug & Test® technology allows for interchangeable sensors to be used with a Mark-10 M71, M51, or M31 indicator. All calibration and configuration data is saved in the smart connector.

▲ The Plug & Test® connector locks into the receptacle in the indicator when fully inserted. Dual buttons on the indicator housing release the connector for easy removal. Gold plated spring contacts ensure long lasting and reliable connection.

Specifications

Accuracy:	±0.2% of full scale + sensor
Sampling Rate:	2,000 Hz
Power:	AC adapter: 100-240VAC, 50-60 Hz, 0.3 A Battery: Rechargeable 8.4V NiMH Low battery indicator appears when battery level is low, and gauge powers off automatically when power reaches critical stage.
Battery life:	Backlight on: up to 7 hours of continuous use Backlight off: up to 24 hours of continuous use
USB Output:	Configurable to 115,200 baud.
Configurable settings:	Digital filters, automatic shutoff, default settings, key tones, audio alarms, backlight, calibration
Weight:	0.7 lb [0.3 kg]
Environmental requirements:	40 - 100°F, max. 96% humidity, non-condensating
Warranty:	3 years (see individual statement for further details)

Dimensions in [mm]



In The Box



The M3I force / torque indicator is shipped as shown at left, and includes the following accessories:

- (1) Carrying case
- (1) USB cable
- (1) AC adapter
- (1) Certificate of calibration. A combined certificate for the sensor and an indicator is available at time of order at no charge, part no. CERT-SI.

Force and torque sensors are available separately.

Ordering Information

Model	Description
M3I	Advanced force / torque indicator, 110V
AC1100	Tabletop mounting kit
CERT-SI	Combined certificate of calibration with data, indicator + sensor, calibrated as a set

Alternative AC Adapter Prongs



All instruments include a 110V AC adapter with US prong style. Select an alternative prong adapter (if required) from the table below.

Model	Description
AC1120	Prong for AC adapter, 220V EUR
AC1121	Prong for AC adapter, 220V UK
AC1122	Prong for AC adapter, 220V AUS

Models M7I, M5I, and M3I force / torque indicators are designed for use with Mark-10's Plug & Test® remote force and torque sensors. All calibration and configuration data is saved within the sensors' smart connectors - not the indicator - allowing for true interchangeability. Each sensor series is available in a range of capacities, from 0.25 to 10,000 lbF (1 N to 50 kN) full scale and from 10 ozFin to 5,000 lbFin (7 Ncm to 550 Nm) full scale. Refer to individual sensor data sheets for further details.

Series R50

Universal torque sensors, fixed chuck



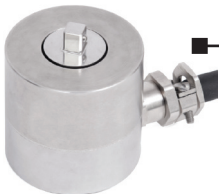
Series R51

Universal torque sensors, interchangeable attachments



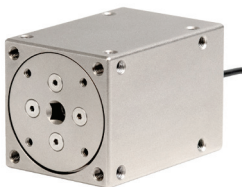
Series R55

Torque sensors



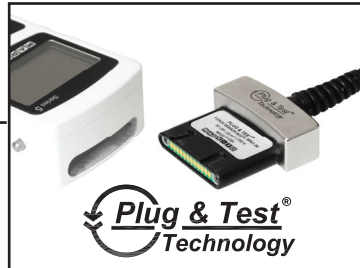
Series R52

Static torque sensors



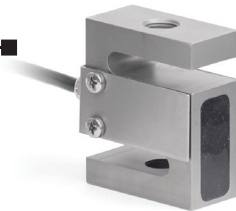
Series R08

Tension / compression force sensors



Series R01

Tension / compression sensors



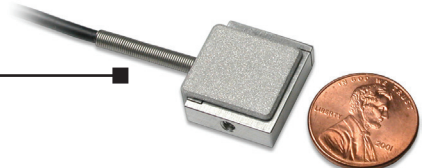
Series R03

Inline tension / compression sensors



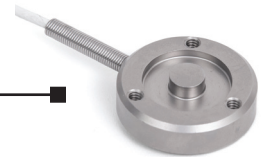
Series R04

Miniature tension / compression sensors



Series R02

Compact compression sensors



Series R05

Ergonomics testing push / pull sensors



Series R06

Wire crimp pull sensor



Model M7I

Professional Indicator



Model M5I

Advanced Indicator



Model M3I

Basic Indicator

