

MH 750

PROGR. MULTITURN HOLLOWSHAFT ENCODER

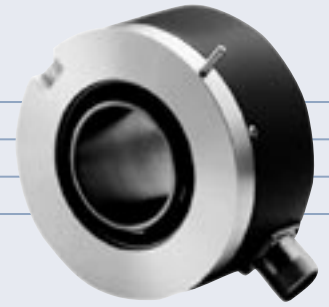
Programable Absolute Multiturn Hollow-Shaft

SSI-Interface

25 Bits (13 Bit/Rev. x 12 Bits Rev.)

10-30 Volts DC RS422 or RS485

Hollow-Shafts 10 – 50,8 mm



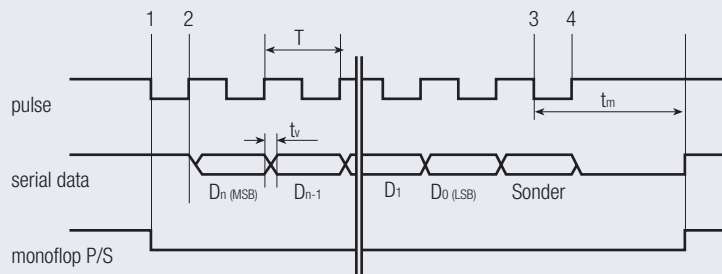
ELECTRICAL SPECIFICATIONS

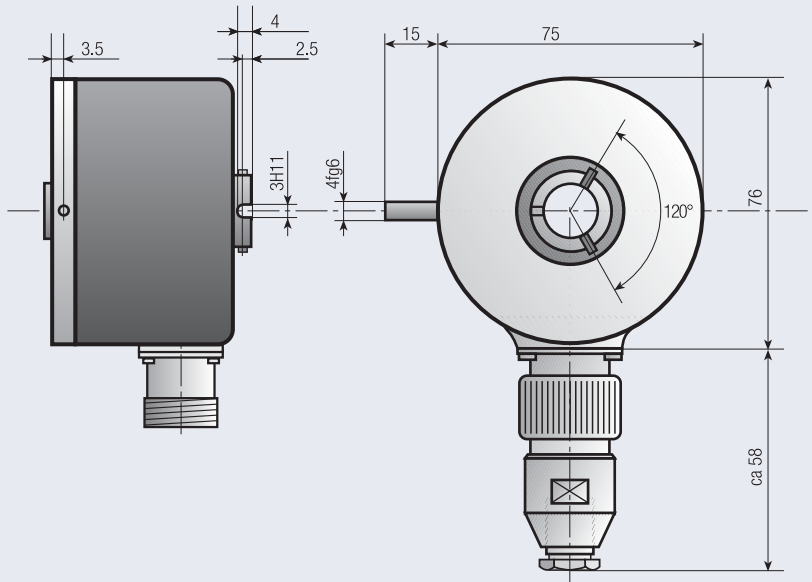
Supply Voltage	10 - 30 V DC
Current Consumption	60 mA (max)
Output Circuit	RS422 or RS485
Codes Available	Gray or Binary
Logic Level (high)	Vcc - 0.7 Volt
Logic Level (low)	0.25 Volt (max)
Short Circuit Protection	100 %

MECHANICAL SPECIFICATIONS

Cover	Aluminium
Body	Aluminium
Shaft	Stainless Steel
Speed	6000 RPM (max)
Torque	> 0.05 Nm
Loading	Axial 40 N, Radial 30 N
Protection	IP 65
Temperature	-20°...+70°C (-4°...+158°F) +100°C (+212°F) Optional
Weight	depends on Shaftsize (700-1200g)

OUTPUT SIGNALS





Drawing available as:
dxf, iges, step, sld file

ORDERING CODE

MH 750 - -

a b c d e f g h Increment./Rev. (Bits) x Number of Rev. (Bits)

- a Group Function**
MH=Multi-Turn Hollow Shaft
- b Basic Series Number**
750
- c Shaft Size D**
10=10 mm 12=10 mm
14=14 mm bis 50=50 mm
- d Mechanical Options**
0=None

- e Connector Type**
0=2 mtr. Cable 8=16 Pin
- f Connector Location**
R=Radial
- g Output Signals**
E=Binary <->
F=Gray <->
- h Output Circuit Type**
8=10-30VDC RS422
V=10-30 VDC RS485

Note: Special functions and designs will be designated by a 4 digit code at the end of the part number. Consult factory for further details

CONNECTIONS

Function	16 Pin Connector	Cable Colour Code	Function	16 Pin Connector	Cable Colour Code
Data +	1	violet	Output2	9	black/white
Data -	2	brown/white	Output3	10	brown/green
NC	3	green/white	Output4	11	green/grey
TxD/T,R+	4	yellow/white	GND	12	blue
TxD/T,R-	5	grey/white	Preset-IN	13	yellow
Pulse+	6	white/pink	Up/Down	14	brown
Pulse-	7	blue/white	UB	15	red
Output1	8	red/white	NC	16	pink