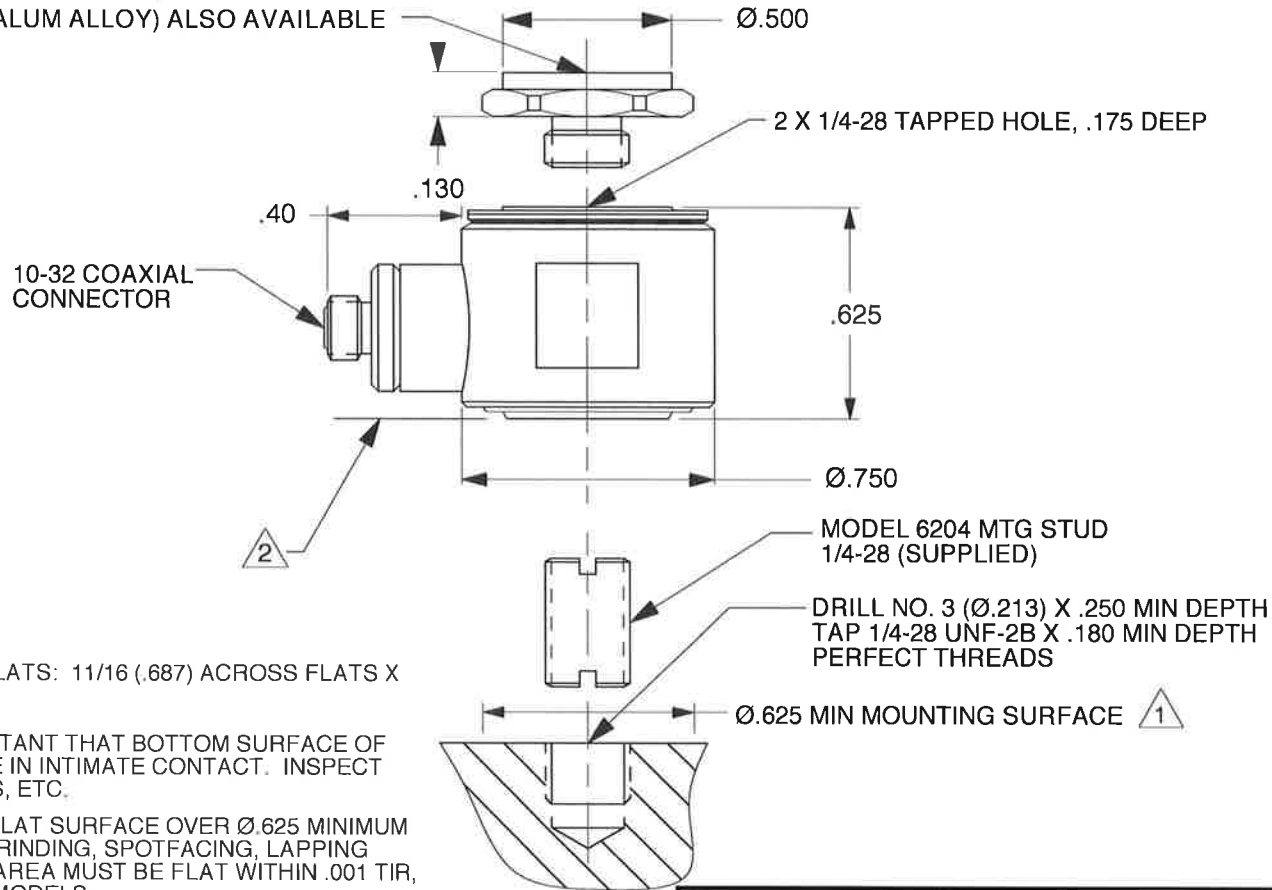


PROPRIETARY AND CONFIDENTIAL

THE INFORMATION CONTAINED IN THIS DRAWING IS THE SOLE PROPERTY OF DYTRAN INSTRUMENTS INC. ANY REPRODUCTION IN PART OR AS A WHOLE WITHOUT THE WRITTEN PERMISSION OF DYTRAN INSTRUMENTS INC. IS PROHIBITED

REVISIONS				
REV	ECN	DESCRIPTION	BY/DATE	CHK APPR
A	4625	IS: "MUST BE FLAT WITHIN" WAS: "MUST BE FLAT WITHIS"	R.L.A. 5/3/07	CES CES
B	11429	ADDED DIMENSION DIA .750	LA 11/05/14	94 LN

MODEL 6210S IMPACT CAP, MATERIAL:
17-4 PH ST. STEEL, ROCKWELL C44-45
(SUPPLIED)
MODEL 6210A (ALUM ALLOY) ALSO AVAILABLE



- 3 WRENCH FLATS: 11/16 (.687) ACROSS FLATS X .31 HIGH.
- 2 IT IS IMPORTANT THAT BOTTOM SURFACE OF SENSOR BE IN INTIMATE CONTACT. INSPECT FOR BURRS, ETC.
- 1 PREPARE FLAT SURFACE OVER Ø.625 MINIMUM AREA BY GRINDING, SPOTFACING, LAPPING ETC. THIS AREA MUST BE FLAT WITHIN .001 TIR, TYP BOTH MODELS.

USED ON	NEXT ASSY
APPLICATION	
THIRD ANGLE PROJECTION	
USA	

UNLESS OTHERWISE SPECIFIED:
INTERPRET DIM & TOL PER ASME Y14.5M - 1994.
REMOVE BURRS.
COUNTERSINK INTERNAL THDS 90° TO MAJOR DIA.
CHAM EXT THDS 45° TO MINOR DIA.
THD LENGTHS AND DEPTHS ARE FOR MIN FULL THDS.
THDS PER MIL-S-7742.
DIMENSIONS APPLY AFTER FINISHING.

63 ✓

ALL MACHINED SURFACES.
TOTAL RUNOUT WITHIN .005.
BREAK SHARP EDGES .005 TO .010.
MACHINED FILLET RADII .005 TO .015.
WELDING SYMBOLS PER AWS A2.4.
ABBREVIATIONS PER MIL-STD-12.

UNLESS OTHERWISE SPECIFIED:
DIMENSIONS ARE IN INCHES.
DIMENSIONS IN BRACKETS [] ARE IN MILLIMETERS
TOLERANCES ARE:
INCHES METRIC ANGLE
.XX ± .03 .X ± 0.8 ∠ 1°
.XXX ± .010 .XX ± 0.25

MATERIAL

FINISH

DO NOT SCALE DRAWING

CONTRACT NO.	
APPROVAL	DATE
ORIG	NC 12/20/00
CHK	NC 12/20/00
APP	LN 11/19/14
APP	

DYTRAN MASTER
INSTRUMENTS, INC. Chatsworth, CA
ONLY INVENTED

TITLE:
**OUTLINE/INSTALLATION DRAWING,
MODEL 1051C**

SIZE A	CAGE CODE 2W033	DWG. NO. 127-1051C	REV B
------------------	---------------------------	------------------------------	-----------------

SCALE: NONE

SHEET 1 OF 1

Model Number 1051C	PERFORMANCE SPECIFICATION	DOC NO PS1051C
	DYNAMIC FORCE SENSOR, CHARGE MODE	REV A, ECN 12897, 08/18/16



- COMPRESSIVE & TENSILE LOADINGS
- EXCELLENT LINEARITY
- CHARGE MODE

PHYSICAL

Weight, Max.
Connector
Material
Sensing Element

ENGLISH		SI	
1.1	oz	32	grams
10-32		10-32	
Stainless Steel		Stainless Steel	
Stainless Steel		Stainless Steel	
Quartz		Quartz	
Compression		Compression	

PERFORMANCE

Sensitivity, ± 15 %
Compression Range
Maximum Compression
Tension Range
Maximum Tension [1]
Linearity [2]
Resonant Frequency, Unloaded
Stiffness, Force Sensor

-18	pC/lbf	-4.0	pC/N
5,000	lbf	22,241	N
15,000	lbf	66,723	N
500	lbf	2,224	N
1,000	lbf	4,448	N
±1	% Full Scale	±1	% Full Scale
>75	kHz	>75	kHz
11.4	lbf/μin	2.0	kN/μm

ENVIRONMENTAL

Maximum Shock, Unloaded
Maximum Vibration, Unloaded
Temperature Range
Thermal Coefficient
Seal

10,000	g pk	98100	m/s ²
2,500	g pk	24525	m/s ²
-100 to +500	°F	-73 to +260	°C
0.03	%/°F	0.05	%/°C
Welded/Epoxy		Welded/Epoxy	

ELECTRICAL

Capacitance
Insulation Resistance

18	pF	18	pF
1E+12	Ω	1E+12	Ω

This family also includes:

Model	Sens. (pC/lbf)	Compression Range (lbf)	Max. Compression (lbf)	Tension Range (lbf)	Max. Tension (lbf)

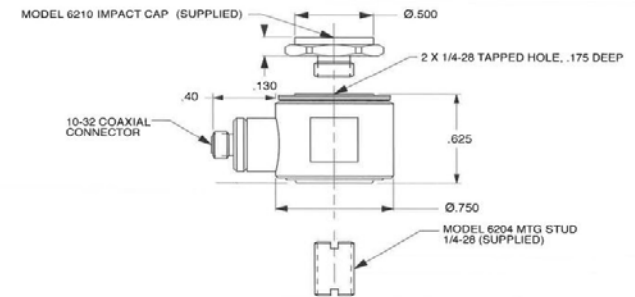
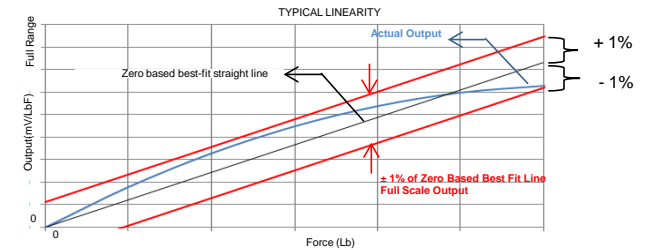
Refer to the performance specifications of the products in this family for detailed description.

Supplied Accessories:

- 1) Accredited calibration certificate (ISO 17025)
- 2) MOD 6210 STEEL IMPACT CAP
- 3) MOD 6204 1/4-28 MOUNTING STUD

Notes:

- [1] Absolute maximum tension. Do not exceed in any case!
- [2] Percent of full scale or any lesser range, zero based best-fit straight line method.



Units on the line drawing are in inches, units in brackets are in millimeters. Refer to 127-1051C for more information.



21592 Marilla Street, Chatsworth, California 91311 Phone: 818.700.7818 Fax: 818.700.7880 www.dytran.com
For permission to reprint this content, please contact info@dytran.com