

Multi-Axis Load Cell Transducers



LOAD CELL SPECIFICATIONS

Model	Maximum Load Capacity (per channel)	Maximum Moment Capacity (per channel)	Fatigue Rated Load Capacity for Single Axis	Nonlinearity
TR3D-A-1K	1,000 lb (4.4 kN)	30 lb-ft (40 N-m)	380 lb (1.6 kN)	<0.5% of full scale output
TR3D-A-3K	3,000 lb (13.3 kN)	160 lb-ft (215 N-m)	2,500 lb (11.1 kN)	<0.5% of full scale output
TR3D-A-5K	5,000 lb (22 kN)	210 lb-ft (280 N-m)	3,750 lb (16.6 kN)	<0.5% of full scale output
TR3D-A-5/5/10K	X & Y axes 5,000 lb (22 kN) Z axis 10,000 lb (44 kN)	270 lb-ft (365 N-m)	4,200 lb (18.6 kN)	<0.5% of full scale output
TR3D-B-250	250 lb (1.1 kN)	12 lb-ft (16 N-m)	200 lb (900 N)	<0.5% of full scale output
TR3D-B-1K	1,000 lb (4.4 kN)	48 lb-ft (65 N-m)	615 lb (2.7 kN)	<0.5% of full scale output
TR3D-B-4K	4,000 lb (17.7 kN)	165 lb-ft (220 N-m)	3,100 lb (13.8 kN)	<0.5% of full scale output
TR3D-B-4500	4,500 lb (20 kN)	165 lb-ft (220 N-m)	3,100 lb (13.8 kN)	<0.5% of full scale output
TR3D-B-5/5/10K	X & Y axes 5,000 lb (22 kN) Z axis 10,000 lb (44 kN)	385 lb-ft (520 N-m)	X, Y Axes 5,000 lb (22 kN) Z Axis 6,000 lb (26.6 kN)	<0.5% of full scale output
TR3D-B-16K	16,000 lb (71 kN)	1,300 lb-ft (1.7 k N-m)	12,350 lb (54 kN)	<0.5% of full scale output
TR3D-C-10K	10,000 lb (44 kN)	900 lb-ft (1.2 kN-m)	8,000 lb (35 kN)	<1% of full scale for X and Y axes <2% of full scale for Z axis
TR3D-C-16K	16,000 lb (71 kN)	1,500 lb-ft (2.0 kN-m)	12,000 lb (53 kN)	<1% of full scale for X and Y axes <2% of full scale for Z axis
TR3D-C-40K	40,000 lb (177 kN)	8,000 lb-ft (10.8 kN-m)	24,000 lb (106 kN)	<1% of full scale for X and Y axes <2% of full scale for Z axis
TR3D-D-50K	50,000 lb (222 kN)	14,000 lb-ft (19.0 kN-m)	35,000 lb (155 kN)	<1% of full scale for X and Y axes <2% of full scale for Z axis
TR3D-D-100K	100,000 lb (444 kN)	15,000 lb-ft (20.3 kN-m)	70,000 lb (311 kN)	<1% of full scale for X and Y axes <2% of full scale for Z axis
TR5D-B-5K	Forces 5,000 lb (22 kN) Moments 600 lb-ft (815 N-m)	800 lb-ft (1.1 kN-m)	5,000 lb (22 kN)	<0.5% of full scale output
TR6D-C-40K	Forces 40,000 lb (178 kN) Moments 7,000 lb-ft (9.5 kN-m)	8,000 lb-ft (10.8 kN-m)	24,000 lb (106 kN)	≤0.5% of full scale for X and Y axes; ≤1.5% of full scale for Z axis Moments ≤0.5% of full scale for all channels

* Temperature Range, Usable: -40°F to 300°F (-40°C to 150°C)



Michigan Scientific Corporation (MSC) has decades of experience designing and manufacturing multi axis load cells. These strain gauge-based transducers are ideal for simultaneously measuring forces in multiple axes in a variety of scenarios. Designed for easy mounting and to fit into applications where space is limited, these load cells provide accurate, reliable results.

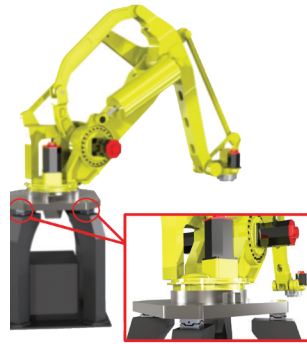
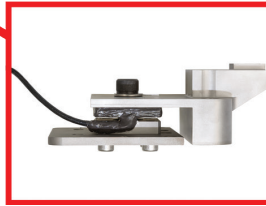
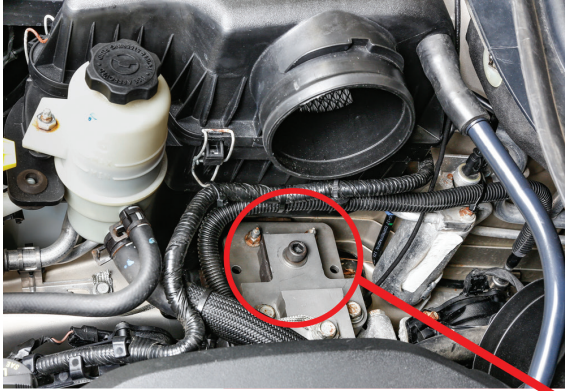
Each load cell transducer is machined from a solid block of stainless steel or aluminum, which ensures excellent linearity throughout the entire force range, as well as minimal hysteresis. Weatherproof coatings are applied to all strain-gauged surfaces to ensure the load cell will survive in almost any environmental condition experienced in industrial or automotive applications.

Careful consideration of the load paths through the transducer and its strain gauge elements minimize sensitivity to erroneous off-axis loading, otherwise known as “crosstalk.” As a result, each measurement axis maintains immunity to interference caused by loading the other axes.

Michigan Scientific load cells have been used extensively across an array of industries. From automotive testing to motorcycle measurements, robotic development to production industries; MSC load cells consistently provide innovative and reliable solutions to any testing application.



Load Cell Applications



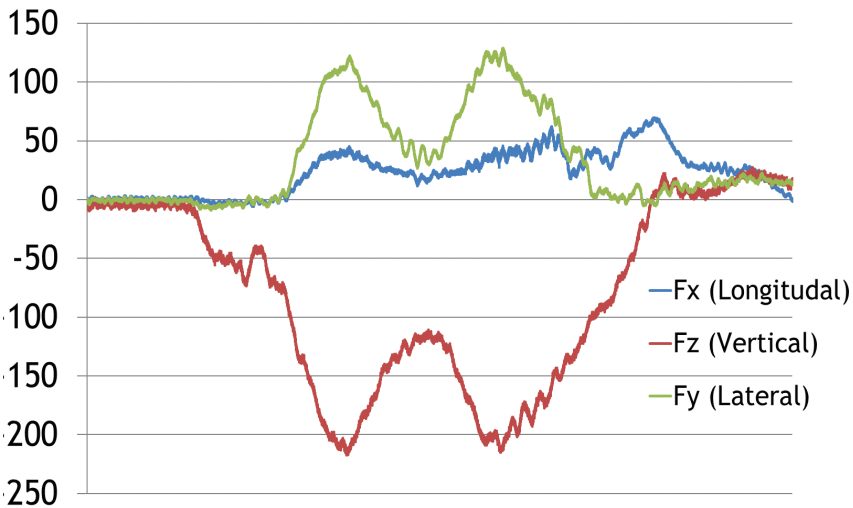
Load Cells are commonly used in industrial applications to measure forces and moments.



Multi-Axis Force Transducers are used in many vehicle applications for testing and validation.

TR3D Transducers are often used in automotive applications, such as measuring engine-to-body mount forces. Here, a TR3D-B-4K is installed to measure forces during engine mount testing.

Forces in Engine-to-Body Mount Testing Measured with TR3D-B-4K



The graph above shows data from force measurements using a TR3D-B-4K to measure forces during an engine mount test.

ADDITIONAL APPLICATIONS

• Automotive Applications

- Body Mounts
- Carrier Bearing Mounts
- Seat Tracks
- Air Bag Inflation Forces
- Powertrain Mounts
- Rear Suspension Mount Forces

• Agriculture & Construction Equipment

- Fifth-Wheel Mount Forces
- Hitch Mount Forces
- Cab Mounts
- Suspension/Axle Mounts
- Implement Forces
- Bucket and Blade Forces
- Drawbar Load Measurements

• Machine Tool Cutting Forces

• Rock/Granite Machining Operations

• Biomedical Prosthetics

Related Products

SGA3A THREE CHANNEL STRAIN GAGE AMPLIFIER BOX

The Michigan Scientific SGA3A Strain Gage Amplifier Box is ideal for use with any of MSC's Three Axis Load Cells. The SGA3A provides highly accurate excitation voltage to the load cell, a stable differential amplifier, and a remotely activated shunt resistor for system span verification. The result is an accurate, high level voltage output signal.



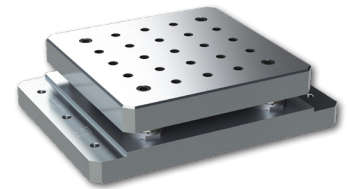
JB3 JUNCTION BOX

The JB3 Junction Box combines the signals from multiple TR3D load cells and outputs the total force acting on a load cell array or a load platform. Up to four of MSC's Three Axis Load Cells can be connected to the JB3. The JB3 has a sensitivity trimming circuit for each input to equalize sensitivity in each load cell.



LP-3030 LOAD PLATFORM

The LP-3030 is a compact load platform designed to have higher force and moment capacity than individual load cells. The 12 individual cell channels can be used to calculate the net forces and moments. The LP-3030 is available in a variety of load capacities and uses a universal mounting pattern.



Additional Information

Customization

Alterations and customizations can be made to standard load cells. Michigan Scientific also has extensive experience in the design and manufacturing of custom fixturing. From cable modifications, to capacity alterations, MSC can create a custom solution to any force and moment measurement application.

Repairs and Calibration

All Michigan Scientific load cells are factory calibrated and come with an NIST traceable calibration report. It is recommended that load cells are calibrated periodically to monitor any channel unbalances or sensitivity changes throughout the lifetime of the transducer. If the load cell is damaged, it may be repaired following evaluation.



Michigan Scientific Corporation
www.michsci.com

8500 Ance Road
Charlevoix, MI 49720
Tel: 231-547-5511
Fax: 231-547-7070

321 East Huron Street
Milford, MI 48381
Tel: 248-685-3939
Fax: 248-685-5406

Details and specifications provided in this document are purely for informational purposes and are subject to alterations. No liability is accepted for errors or omissions.

©2021 Michigan Scientific Corporation

REV: 07/21/21